

# ELECTROCOUP F3015

CONTINUALLY STRIVING TOWARDS PERFECTION



[www.infaco.com](http://www.infaco.com)

## INFACO THE COMPANY

In 1984, INFACO S.A. founded by our President Daniel Delmas, invented the world's first **electric pruning shear** and called it **ELECTROCOUP**.

In 1985, at the SITEVI International Exhibition in Montpellier, Daniel Delmas won **the Golden Palm Award for Best Innovation** for his invention. INFACO sold its first 500 ELECTROCOUP shears during the three-day viticultural trade show.

Ever since, the ELECTROCOUP has revolutioned pruning practices in the viticulture industry around the world and has become a house hold name in the horticulture industry.

«**Customers Satisfaction**» has been the driving force behind INFACO's success and we have strived continually to improve on every generation of ELECTROCOUP that has been released. As a result, INFACO has managed to retain and keep happy, its ever growing and diverse customer base - operating in vineyards, orchards, olive groves, parklands and more.

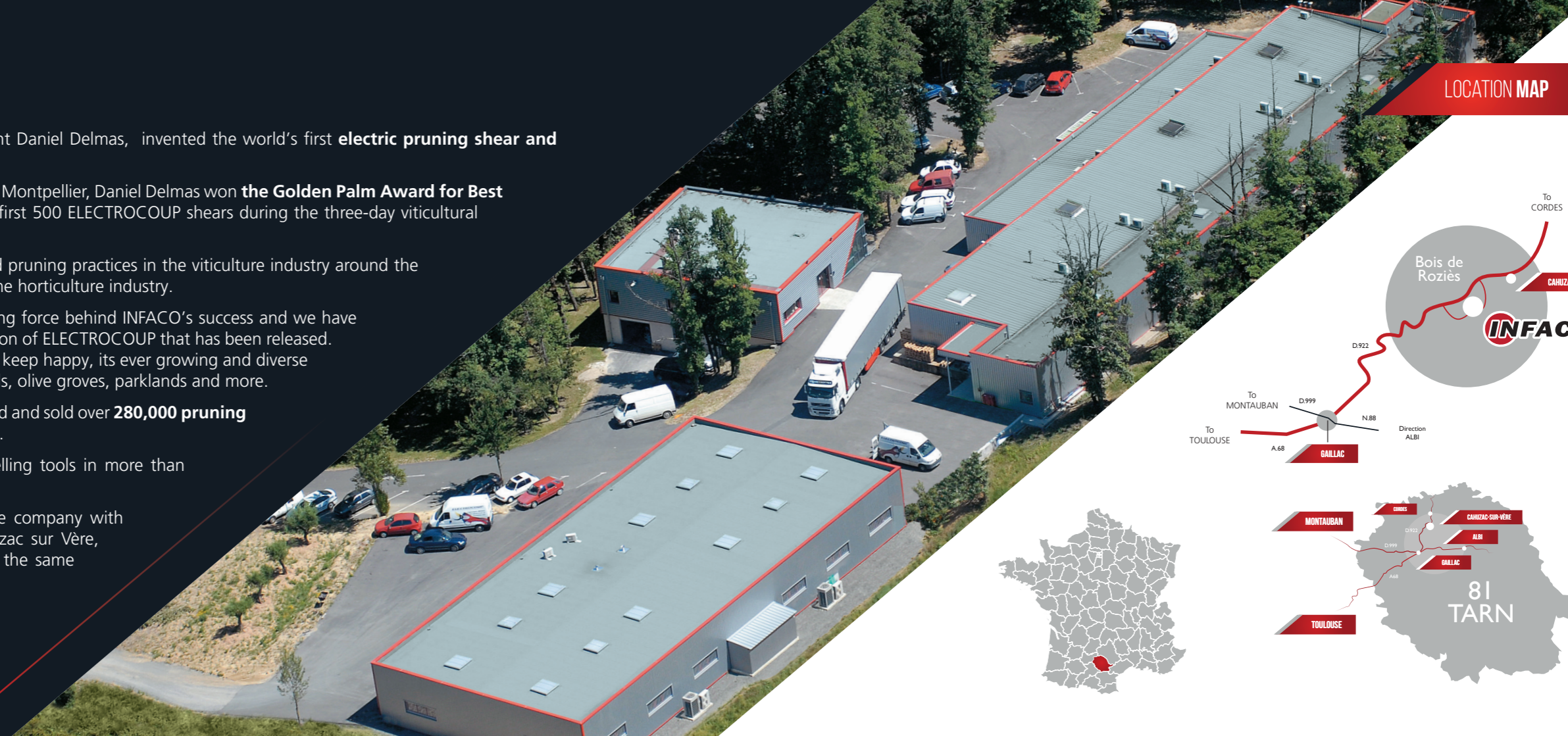
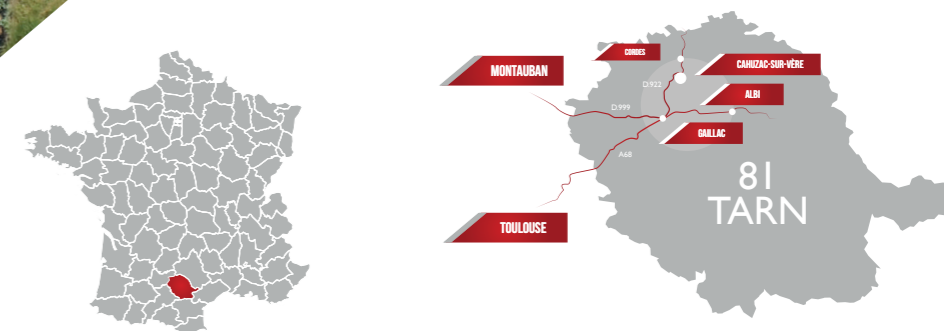
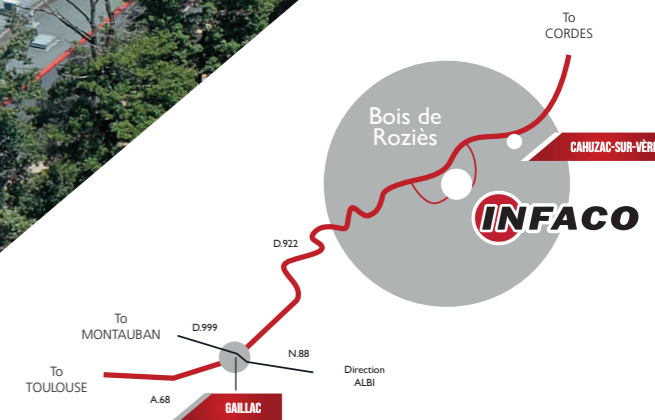
In over 30 years, INFACO has designed, produced and sold over **280,000 pruning shears**, and F3015 being in the 8th generation.

Nowadays, INFACO is an international firm selling tools in more than forty countries around the world.

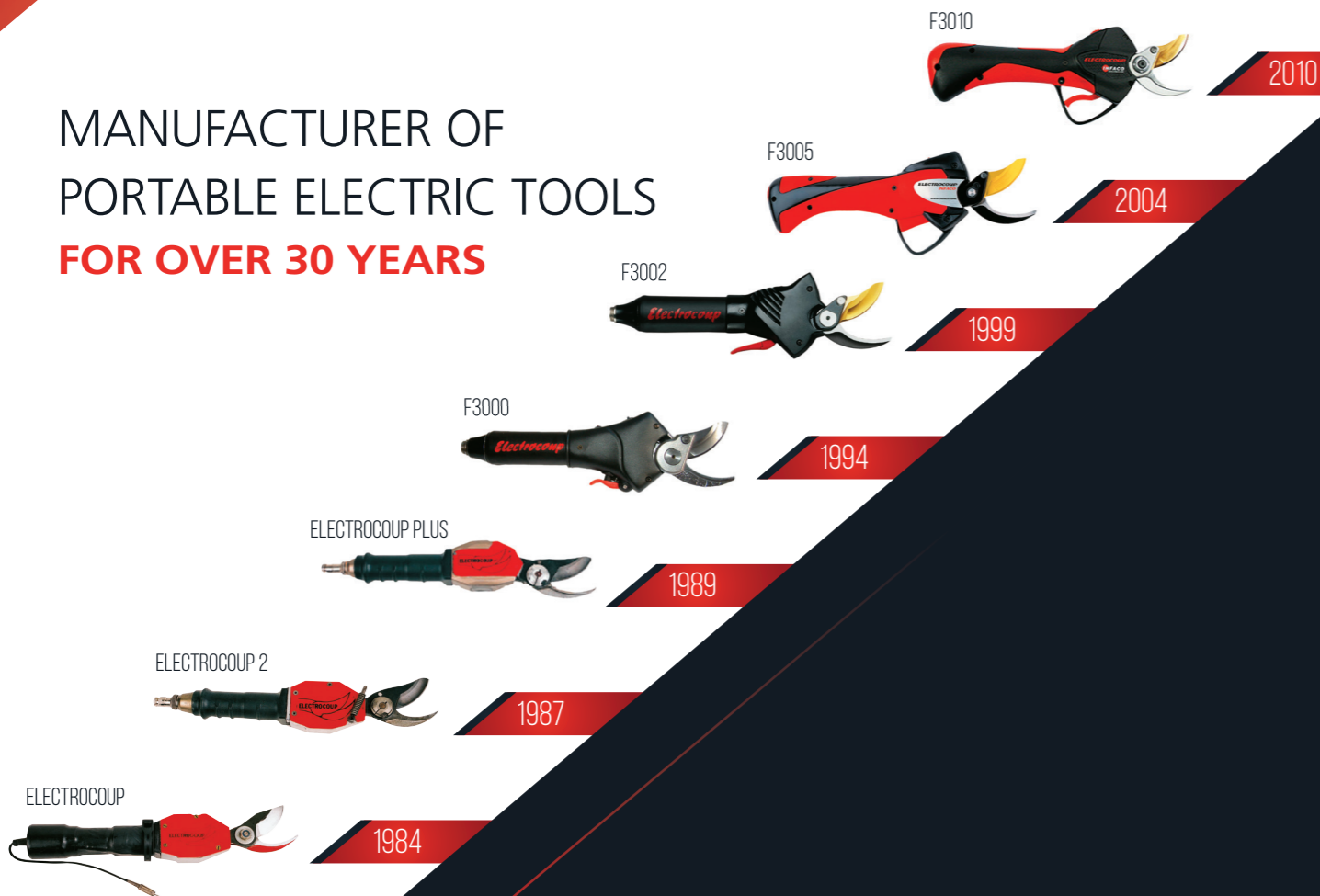
Daniel DELMAS and his son Davy still run the company with a staff of more than 100 employees in Cahuzac sur Vère, (South-West of France (81 – Tarn)), driven by the same passion from the very first day.

[www.infaco.com](http://www.infaco.com)

LOCATION MAP



MANUFACTURER OF  
PORTABLE ELECTRIC TOOLS  
**FOR OVER 30 YEARS**



2016

## **F3015:** THE 8TH GENERATION OF ELECTROCOUP PRUNING SHEARS

### **Research & Development**

INFACO has a very motivated, high-achieving design and research department setup at its headquarters. In September 2005 an exclusive state of the art research & development facility was built. Established in September 2005, an exclusive premises was built, equipped with state of the art research and development facilities. In-house industrial designers, quality controllers and engineers strive to sustain the recognized strengths of the company and focus on **designing reliable and durable tools** of the future. Once past its design stage, a prototype of the idea is developed and put through several tests for months before optimum results are achieved and implemented in future designs.

### **Our First Motivation: PASSION**

A dedicated team, including Daniel DELMAS who invented the electric pruning shears in 1984, continuously strives to improve the existing products as well as develop new portable electric tools. **6 years of research** were spent perfecting the latest electronic pruning shears, ELECTROCOUP F3015, exemplifying the passion underlying the work of the whole research and development team. In great secrecy the pruning shears were tested for two entire seasons in order to fully optimise their performance and reliability.

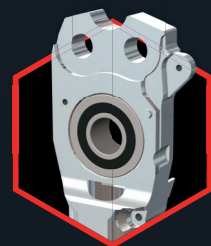


## F3015: CONTINUALLY STRIVING TOWARDS PERFECTION

The ELECTROCOUP F3015 electric pruning shears will once again set new bench marks in the industry. A tool designed for pruning professionals, the F3015 has evolved from its predecessors to be a more reliable and high-quality tool, preferred by users throughout the world.

High quality materials have been selected with the utmost care in developing this new model. Extended Research & Development has helped achieve a light and compact body on the new generation of tools. The new tools have been designed to run on a new «Brushless Motor» technology powered by a futuristic «Lithium-Ion» battery.

**The aluminium body** (made of a special alloy used in aeronautics) holds and keeps together most components in the pruning shear and is now covered by a **lifetime warranty**.



THE ALUMINIUM BODY IS COVERED  
**BY A LIFETIME WARRANTY**

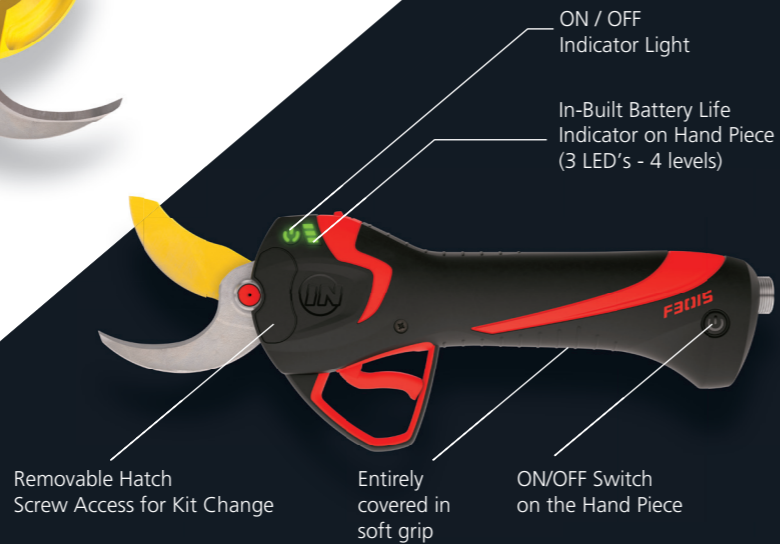


BVcert.6152145



- + Compact & Light: 790g
- + Performances: Exceptional Power and Efficiency
- + High Cutting Capacity:
  - 40mm Standard Kit
  - 45mm Medium Kit
  - 55mm Maxi Kit

- + Ergonomic Design
- + Soft and Comfortable Grip
- + Very Accurate Progressiveness



### Electronic Half-Aperture Adjustment

Choose easily from one of 10 preset positions to set your ideal half aperture setting.



### Electronic Blade Bypass Adjustment

Optimize the service life of your blades with the help of the new electronic crossing control system. Choose easily from one of 10 preset positions to set your ideal blade crossing.

### 2 operating modes: PROPORTIONAL and PULSE modes

**PROPORTIONAL:** Blade opens and closes progressively depending the action of the trigger.  
**PULSE:** Blade either opens or closes at maximum speed depending on action of the trigger.

Number of Cuts stored in the shears

Work Intensity stored in the shears

## ULTRA-COMPACT LITHIUM ION BATTERY

The Lithium-ion Cobalt battery weighs only 810g. The storage cells of the battery have been chosen for their reliability and capacity to deliver intense current.

- + 120Wh LITHIUM Battery
- + Weight: 810g
- + Full-day complete autonomy 9hrs\*
- + Battery with storage cells protection and management electronic system (BMS)
- + High storage capacity LITHIUM cells «High Power » Long Life » Intelligent Battery Technology

### 5 YEAR WARRANTY ON THE BATTERY

« INFACO Exclusive »

Contact your local retailer for the conditions of warranty.

\*depending on the use and storage conditions



## F3015 BATTERY VEST

### CHOOSE HOW YOU CARRY THE BATTERY

Four battery carrier options.

The vest coupled with the lightness of the battery provides comfort and flexibility.

The new F3015 battery can be carried in 4 different ways:

- 1- On a vest, with braces
- 2- On a belt (without removable braces)
- 3- Clipped to the trouser belt
- 4- Slipped into the pocket

### AIR FLOW CONTACT SYSTEM

The new vest has been designed to optimize air circulation and significantly reduces perspiration.

The very small surface of the vest also reduces back perspiration.







## INTELLIGENT AUTOMATIC CHARGER

### Rapid charging: 90 minutes

The F3015 Lithium battery charger enables a 90% charge in 1hr.

Complete charge is obtained within 90 minutes (inclusive of cell balancing).

The F3015 battery is sufficient for a full day's work.

The charger is provided with two charge outlets (like the F3010). Specially designed to power energy-intensive tools such as the POWERCOUP PW2 saw, pruning shears, Hedge trimmer, desuckering tool, electronic vibrating olive harvester...

### Battery Sleep Mode function

« Long Life » Sleep mode: makes it possible to protect the battery during an extended storage period thus optimising its service life.

Recharging is no longer required during the off-season. Just press the sleep button on the charger and charge the battery for a few hours at the end of the every pruning season, and store in its case until next season.

## TECHNICAL CHARACTERISTICS

	Standard F3015	Medium Kit	Maxi Kit
Shear Weight (g)	790g	+ 70g	+ 480g
Blade Opening (mm)	60mm	70mm	100mm
Cutty Capacity (mm)	40mm	45mm	55mm
Blade Point Speed (mm/s)	271,6	240	175,12
Blade Axis Torque (N.m)	184,3	223,2	360
Half-Aperture Function	YES (switch)		
Half-Aperture Adjustment	YES		
Blade overlap Adjustment	YES		
Operating Mode	Pulse / Progressive		
On/Off Switch on the Tool	YES		
In-built battery life indicator	YES		
Aluminium Body Structure	YES		
Injury Prevention System	YES (DSES option)		

BATTERY F3015	
Battery Weight (g)	810g
Weight of the Helix Cable (g)	150g
Right Hand/Left Hand Adaptable	YES
Battery Average Autonomy	9hrs depending on use
Complete Charging Time	1 h 30
Battery Average Voltage	48 Vcc
Charger Feed Voltage	230 V 50 Hz 110 V 60 HZ
Sleep Mode Function	YES
Powercoup Range Compatible Battery	YES
<b>Warranty</b>	<b>12-month warranty (3 years for the motor and gear box, aluminium body covered by life warranty)</b>



Up to 3 seasons under warranty if you participate in the Annual Servicing programme by the end of the first year.

The warranty extension applies to all of the F3015\* parts, including the motor, gear set, electronics, sensor card, battery and charger.

\*Excluding parts subject to normal wear and tear

## F3015: MUCH MORE THAN ONE TOOL

Like its predecessor, the electric pruning shears allows you to change the cutting head yourself, depending on the kind of work you want to do.

The tool's main asset is its versatility allowing the user to switch between the Standard, Medium and Maxi Kits.

It only takes 5 mins to change the kits to suit various cutting applications.

**The only shears in the world with 3 interchangeable heads, adjustable half-aperture and DSES security system.**

**F3015 is available from the factory in Standard or Medium versions.**

## 3 KITS ON 1 TOOL

Easily change the cutting head to suit to your needs.



F3015 STANDARD KIT

**To be used on wood up to 40mm.**

Ideal for cutting vine and can be adapted for certain applications in tree lopping.

This kit has the best ratio between cutting rate and power.



F3015 MEDIUM KIT

**To be used on wood up to 45mm.**

With the Medium kit, increase the cutting capacity of your tool without sacrificing working speed. Specially designed for cutting small to medium sized branches.

Ideal for use in orchards, parkland and forestry work.



F3015 MAXI KIT

**To be used on wood up to 55mm.**

Specially designed for cutting medium to large size branches.

Ideal for vine coppicing and fruit trees transforming.

The Maxi kit will give your F3015 unrivalled cutting power and capacity.

F3015 STANDARD



F3015 MEDIUM



F3015 MAXI KIT





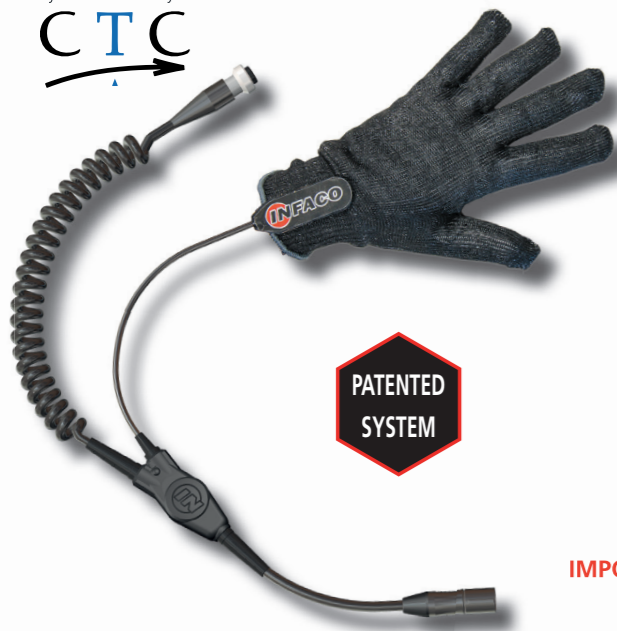
## ADDITIONAL ELECTRONIC SAFETY SYSTEM

For 25 years, INFACO has been a pioneer in electronic injury prevention systems and is the only manufacturer to offer two electronic safety devices.

To offer safer solutions and always more innovative systems at reasonable costs, each year, INFACO devotes significant resources in Research and Development.



System certified by:



PATENTED  
SYSTEM

## WIRED SAFETY SYSTEM DSES OPTION

The additional Electronic safety system, invented and patented by the company INFACO, is only compatible with the Electrocoup pruning shears.

It is composed of a conductive glove connected to a specific DSES spiral cable. Wearing and working with the complete device increases the user's safety and reduces the risk of cuts.

As soon as the cutting head and the conductive glove comes to contact, the closing of the blade is immediately stopped and the blade returns to the open position, thus reducing the risk of an accident.

Unlike reinforced or metal-chain gloves, the special DSES gloves is less cumbersome thus ensuring high dexterity and comfort and makes working easier.

DSES has been certified by CTC, an organization authorized by the Ministry of Labour, Employment and Health\*.

\* (1) CTC authorized by a decree from the Ministry of Labour, Employment and Health, dated 20/12/2010 identified by N°0075, published in JOCE (Official Journal of the European Community), attributes: CE type examination certificate N°0075/1702/162/11/12/0903.

**IMPORTANT:** the glove must be connected to a DSES F3015 specific helix cable.

A table comparing the **DSES hard wired** and **DSES Wireless** systems is available from your dealer.



## DSES WIRELESS OPTION

Only available for use on the **ELECTROCOUP F3015** shears, this new wireless safety system is composed of a conductive trigger that makes the connection between the user's body and the shears' electronic system (patented system).

The **DSES WIRELESS** can be used bare-handed. As soon as the cutting head comes into contact with the skin, the pruning shears' blade opens instantly, thereby preventing accidents!

However, if you want to wear gloves to protect from the cold, the **WIRELESS** system imposes wearing **INFACO** conductive gloves, the glove worn on the hand carrying the shears and the opposite hand will not be the same.

The **DSES WIRELESS** system is especially suited to regions with low rainfall, to summer pruning in the arboriculture and landscaping sectors, as well as to pruning (for example: pruning orange trees during the dry season).



INNOVATION : CONDUCTIVE TRIGGER



PATENTED  
SYSTEM

A table comparing the **DSES hard wired** and **DSES Wireless** systems is available from your dealer.



## 48-VOLT **ELECTRIC SHARPNER**

### **SHARPEN YOUR BLADES IN RECORD TIME**

Thanks to its 3-pad connection, the new A48v3 electric sharpener, is now compatible with **batteries of all ELECTROCOUP models F3005 – F3010 – F3015.**

It allows you **to save significant time on daily sharpening.** Optimize your blades for a higher yield from your ELECTROCOUP with the A48V3.

The sharpener can be plugged directly into the 48-volt battery to sharpen your blades making it portable and easy to carry.



## **SOLUTIONS ADAPTED TO HIGH PRUNING WORK**

Like its predecessor, the F3015 with its multiple cutting heads can be adapted to be operated with carbon fibre extension poles in varying lengths.

The F3015 can be fitted with a range of **fixed and telescopic extension poles ranging between 1.2m to 3.5m,** giving a cutting reach of **up to 5m above the ground.**

The pruning shear is controlled by a micro switch housed in a sliding handle on the carbon fibre tube.

The shears can be operated by the user with a single cable between the battery and the pole.

Trigger control information is directly centralized by an electronic micro-card housed in the pole.

The tool's versatility will be appreciated by users doing large cuts or overhead work.



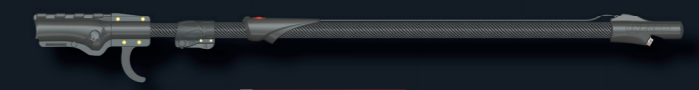
Mobile Control System



Innovation: Electronic Micro-Card Housed in the Pole



**Fixed**  
P8F120 : 120 cm - 0,7 kg  
P8F210 : 210 cm - 1 kg



**Telescopic**  
P8T120 : 120/190 cm - 1,1 kg  
P8T210 : 210/350 cm - 1,5 kg



## A3MV2 48V ELECTRICAL TYING MACHINE

A new A3Mv2 48V tying machine is now available, in addition to the 12V machine.

Once again this tool is compatible with all the Electrocoup batteries, including the new ultra-compact battery of the F3015.



The A3M V2.0 is an electrical tying device that makes vine tying easy. For single or double «Guyot» (cane) training, this machine is highly versatile.

A soft steel wire is used for greater flexibility.

Strong enough to hold until harvesting, it degrades easily after a year, around pruning time.

It is available in several diameters 0.40mm/15.75mil – 0.46mm/18.11mil – 0.50mm/19.69mil, 0.55mm/21.65mil. Tying time is less than 0.4 second.



## POWERCOUN PW2 THE 6 TOOLS IN 1 RANGE

After inventing the 1st electric pruning shears in the world, more than 30 years ago, INFACO has now gained a reputation as an industry leader with its range of electric handheld tools.

Along with the launch of the new F3015's, INFACO is proud to simultaneously launch its new POWERCOUP multifunction tools range. The POWERCOUP PW2 is the second generation with the new range being lighter and more versatile. The new tool comprises a light weight base unit to which multiple heads can be attached and operated by the user with or without an extension. With significant changes, INFACO has retained some of its original cutting heads and merged their other models into the one tool making it extremely diverse. For the first time ever, the Powercoup range can be operated with a chain saw head allowing for a broader application of the tool

**1 Powered Handle = 6 tools: Chain Saw, Hedge Trimmer, Saw, Desuckering Tool, Electronic Vibrating Olive Harvester and Thinner.**

The PW2 handle is equipped with a flat motor using «Brushless» technology without carbon.

Thanks to an electronic recognition, speed automatically changes to suit the attachment.

Electronic recognition allows for the ideal performance of the motor and chooses the best combination of power, speed and torque, based on the type of tool being used.

The POWERCOUP PW2 range can be used with all the INFACO (F3005, F3010, Lithium F3015 and L810B) batteries.





## A PROFESSIONAL AFTER-SALES SERVICE

Infaco has strived to provide an outstanding after-sales service to its customers/users around the world.

In order to do so, a special technical sales team was selected personally by Daniel DELMAS to oversee support operations.

The team's mission has been to continuously provide technical assistance and training to INFACO's world wide distribution network, allowing for a fast professional after-sales support to end users.



## FACTORY SERVICING

During the off-season, INFACO offers **annual servicing in its factory**.

A precise servicing and upgrading procedure is directly executed on each tool either by the manufacturer or one of its many authorized service agents.

More than **35,000 servicing operations** are carried out each year with the help of the administrative, technical and marketing departments.

Getting the Electrocoups serviced every year allows for standard maintenance procedures to be carried out on the tool, ensuring proper functioning of the device when it really matters.

## OUR DEALER NETWORK

Our distribution network will help you out with any information you need to know about your INFACO tools.

Our Technical Sales Team works round the clock to provide quality assistance and support. When choosing an INFACO tool, you will enjoy a high performance product with excellent local technical assistance through your authorized dealer.

The INFACO company works in close cooperation with its authorized distribution network. **Our dealers are the hub of INFACO's strategic organization** and help us provide you with quality products and services.







INFACO

Bois de Roziès – BP2

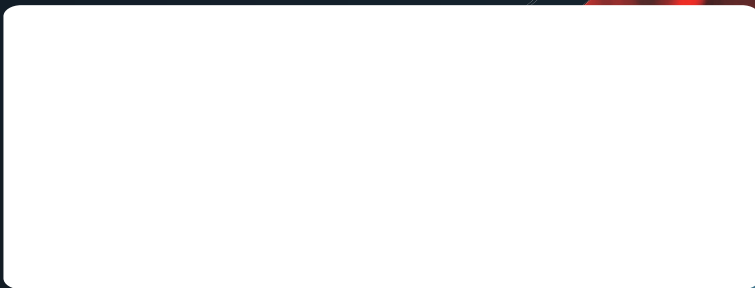
81 140 Cahuzac sur Vère – France

Tél. : 05 63 33 91 49 - Fax : 05 63 33 95 57

electrocoup@infaco.fr

[www.infaco.com](http://www.infaco.com)

YOUR LOCAL DEALER



Réf. : BC15 - EN3 - 2019

