

Gripple Petrol Driver



The Gripple Petrol Driver (GPD) provides quick installation of fence and trellis posts as well as Gripple's range of anchors.

FEATURES / BENEFITS

- Lightweight and portable, weighs just 14.5 kg
- Built for performance with a one year motor warranty
- Fuel efficient, up to 500 posts driven per litre of fuel
- Comfortable, the hammering action is isolated from the operator via spring cushioned handles
- 12 month assembly warranty
- Works in hard to reach areas such as steep banks and uneven ground
- The petrol driver is fully CE compliant



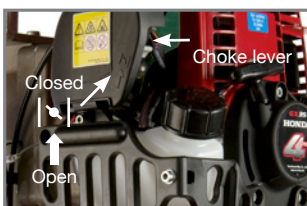
SPECIFICATION

Weight	14.5 kg
Engine	Honda CX35
Blows Per Minute	1720
Joules	26
Kw	1.0 (1.3 HP) at 7,000 rpm
	4-stroke, overhead cam
	Trigger throttle with integrated stop button
Fuel Consumption	0.71 L/h at 7,000 rpm
	Meets strict worldwide emission and noise regulations
Starting System	Recoil (pull start)
Rating	Suitable for continuous use on standard posts
Engine Warranty	1 year Honda warranty
Post Driver Warranty	12 months parts failure
Noise Level	>100 dB hearing protection required
Packed Weight	15 kg



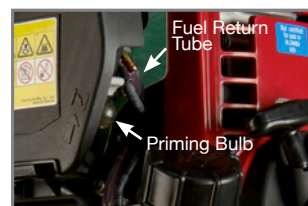
INSTALLATION

1.



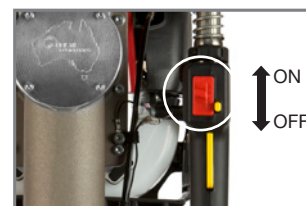
To start a cold engine, move the choke lever to the CLOSED position. To restart a warm engine, leave the choke lever in the OPEN position.

2.



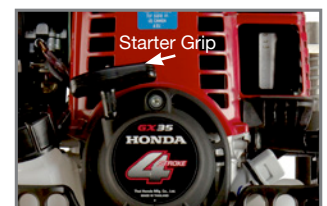
Press the priming bulb repeatedly until fuel can be seen in the clear-plastic fuel-return tube.

3.



Flip the RED switch on the right-hand side handle into the DOWN position. To switch off, put in UP position.

4.



Pull the starter grip lightly until you feel resistance, then pull briskly. Return the start grip gently.

PI-GPD-ENG

www.gripple.com

Gripple's policy is one of continuous development and innovation. We therefore reserve the right to alter specifications, etc. without notice.

Gripple Ltd | The Old West Gun Works | Savile Street East | Sheffield S4 7UQ
Tel 0800 018 4264 Fax 0114 275 1155 email info@gripple.com